

TILE + STONE SOURCE

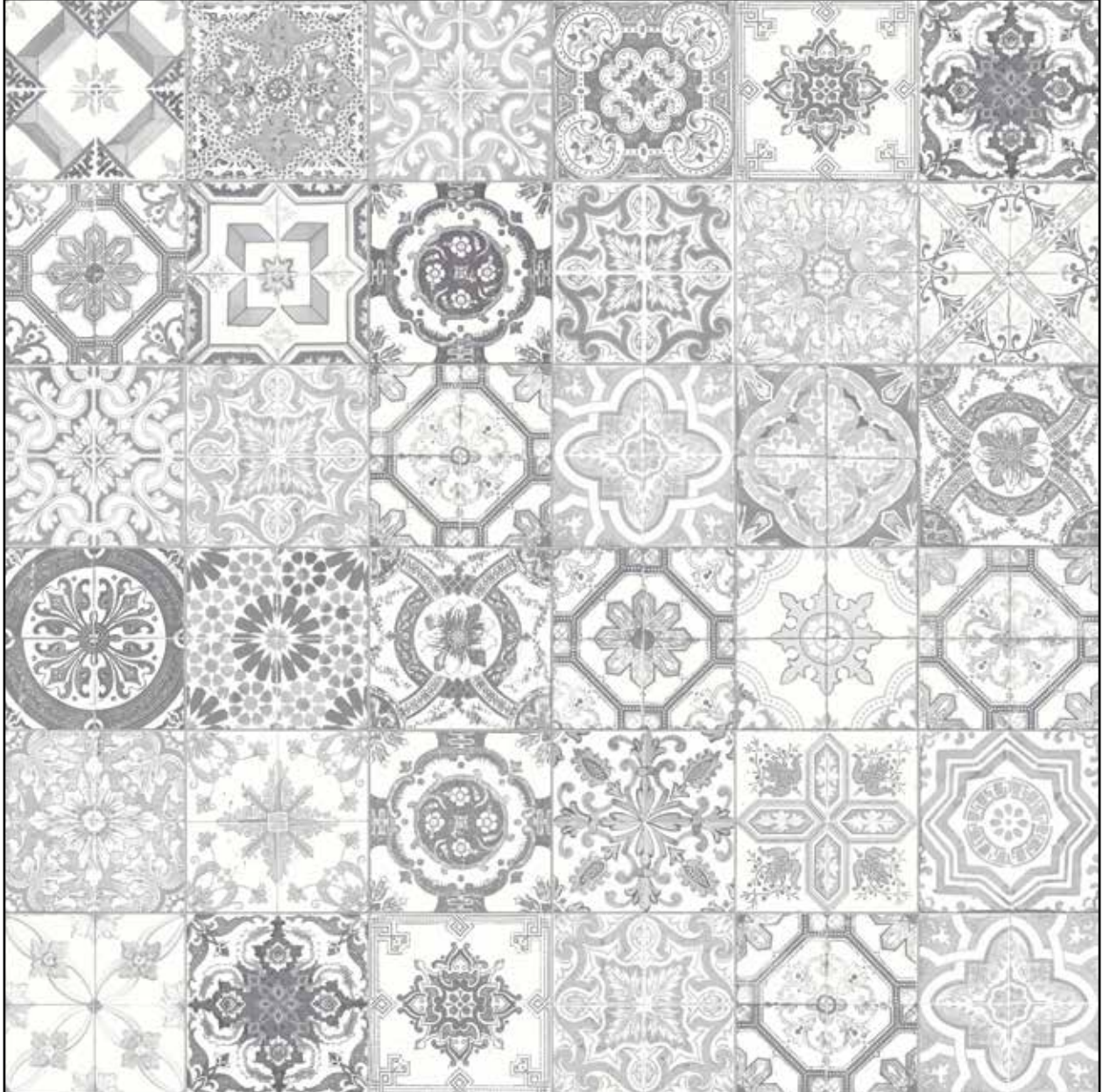
Know Your Tile

MARRAKESH
HD PORCELAIN &
CERAMIC TILE



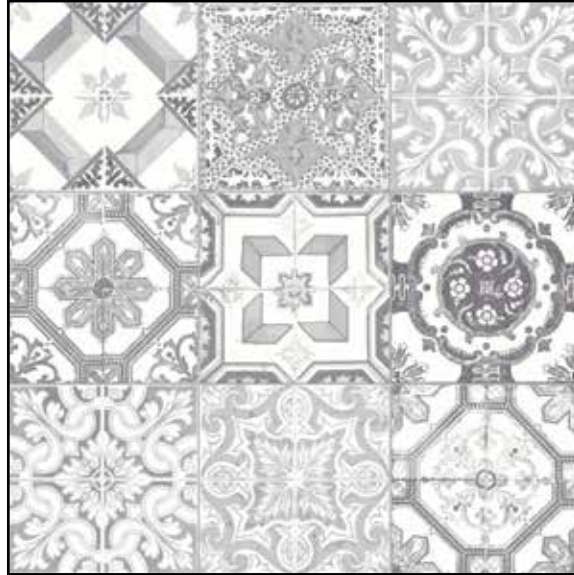
8x8 MARRAKESH GREY MIX
HD PORCELAIN TILE

MARRAKESH GREY MIX
MATTE + GLOSSY
HD CERAMIC & PORCELAIN TILE

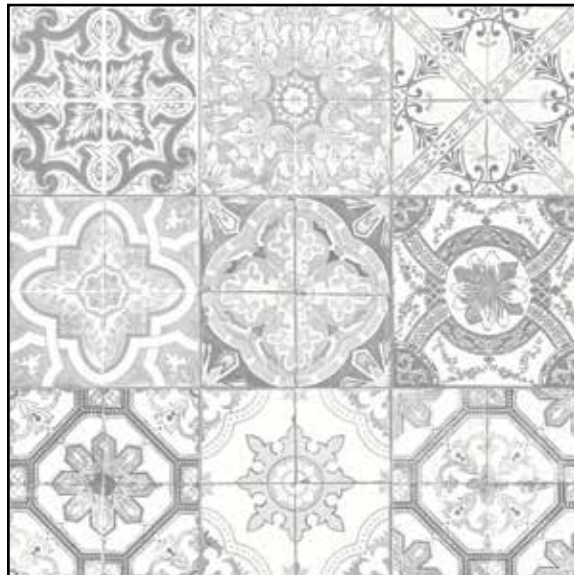


8x8 MARRAKESH GREY MIX
HD CERAMIC & PORCELAIN TILE

MARRAKESH GREY MIX
MATTE + GLOSSY
HD CERAMIC & PORCELAIN TILE



8x8 MARRAKESH GREY MIX
HD MATTE PORCELAIN TILE
334-60-300 (M)



8x8 MARRAKESH GREY MIX
HD GLOSSY CERAMIC TILE
334-42-012 (G)

MARRAKESH COLOR MIX
MATTE + GLOSSY
HD CERAMIC & PORCELAIN TILE



8x8 MARRAKESH COLOUR MIX (SPECIAL ORDER)
HD CERAMIC & PORCELAIN TILE

MARRAKESH COLOR MIX
MATTE + GLOSSY
HD CERAMIC & PORCELAIN TILE



8x8 MARRAKESH COLOR MIX (SPECIAL ORDER)
HD MATTE PORCELAIN TILE
334-60-302 (M)



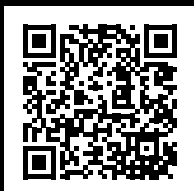
8x8 MARRAKESH COLOR MIX (SPECIAL ORDER)
HD GLOSSY CERAMIC TILE
334-42-013 (G)

Packaging Information

DESCRIPTION	ITEM CODE	LBS/BOX	PCS/BOX	SQFT/BOX	PCS/SKID	SQFT/SKID
MARRAKESH GREY MIX GLOSSY	334-42-012	35.12	25	10.76	1800	774.72
MARRAKESH GREY MIX MATTE	334-60-300	33.77	25	10.76	1800	774.72
MARRAKESH COLOR MIX GLOSSY	334-42-013	34.33	25	10.76	1800	774.72
MARRAKESH COLOR MIX MATTE	334-60-302	33.77	25	10.76	1800	774.72

General Specifications

DESCRIPTION	METHOD	UNIT	8"x8" Matte	8"x8" Glossy
THICKNESS		mm - in	7 mm - 9/32 in	7 mm - 9/32 in
WATER ABSORPTION	EN ISO 10545-3	(%)	≤ 0.5	≤ 3
ABRASION RESISTANCE	EN ISO 10545-7	(PEI)	Class 4	Class 4
SCRATCH HARDNESS		(Mohs)	6	5
BREAKING STRENGTH	EN ISO 10545-4	(lbf)	≥ 300	≥ 250
CHEMICAL RESISTANCE	EN ISO 10545-13	(GL)	Class A - Resistant	Class A - Resistant
FROST RESISTANCE	EN ISO 10545-12		Fully Resistant	Fully Resistant
STATIC COF (WET)	ASTM C-1028	(μ)	≥ 0.70	-
STATIC COF (DRY)	ASTM C-1028	(μ)	≥ 0.60	-
DCOF (WET)	ANSI B101.3		≥ 0.42	< 0.42
SHADE VARIATION			V4	V4





**TILE + STONE
SOURCE**

Know Your Tile

Tile + Stone Source
 #105, 6204 6A St SE
 Calgary, AB T2H 2B7
 403.252.8868

15304 111 Ave NW
 Edmonton, AB T5M 4C8
 780.756.8453

www.tilestonesource.com