

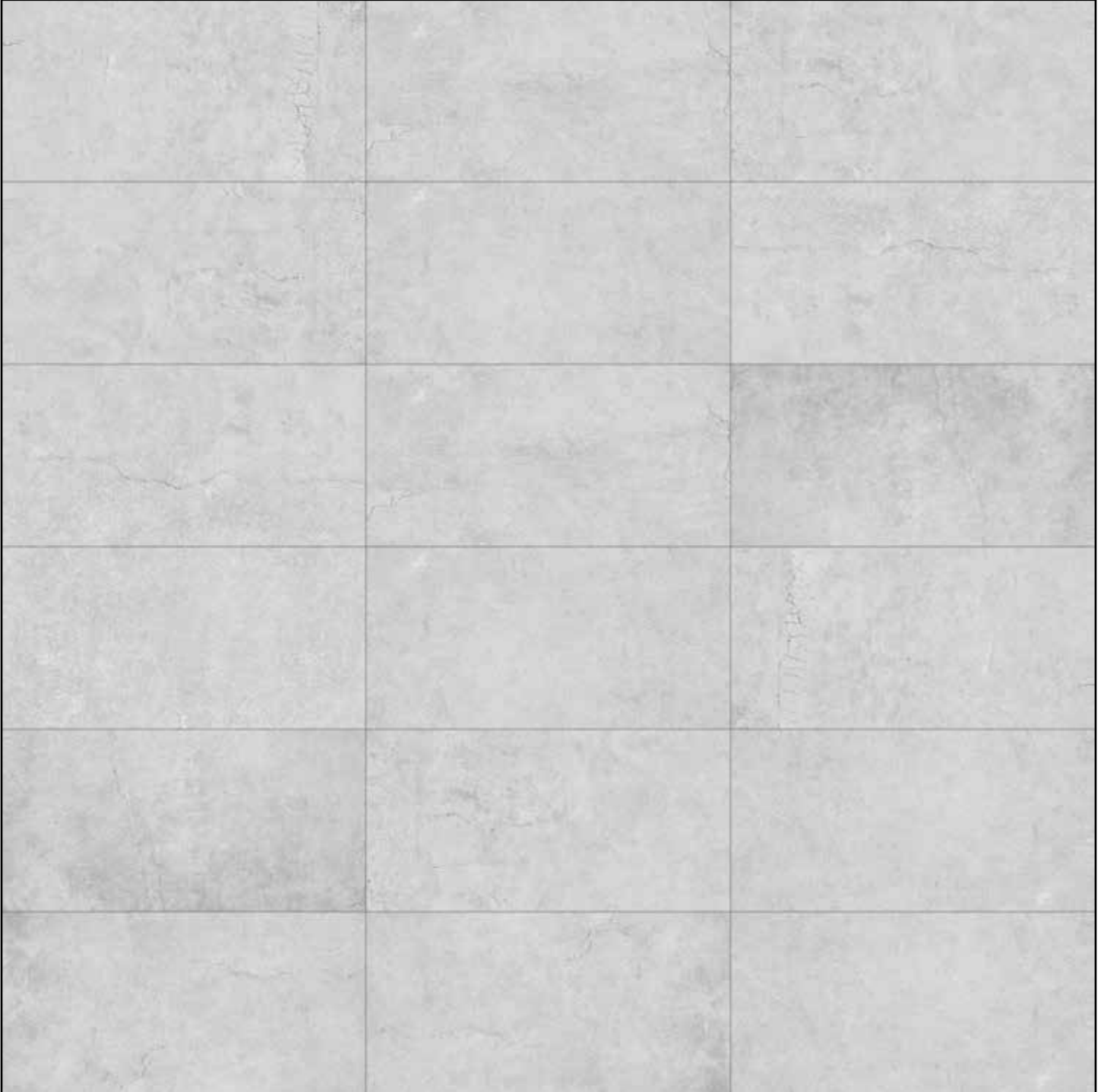
TILE + STONE  
SOURCE

**LORE**  
HD PORCELAIN TILE



18x36 LORE LIGHT GREY GRIT

**LORE SAND**  
GRIT FINISH  
HD PORCELAIN TILE



12x24 LORE SAND GRIT  
HD PORCELAIN TILE

**LORE SAND**  
GRIT FINISH  
HD PORCELAIN TILE

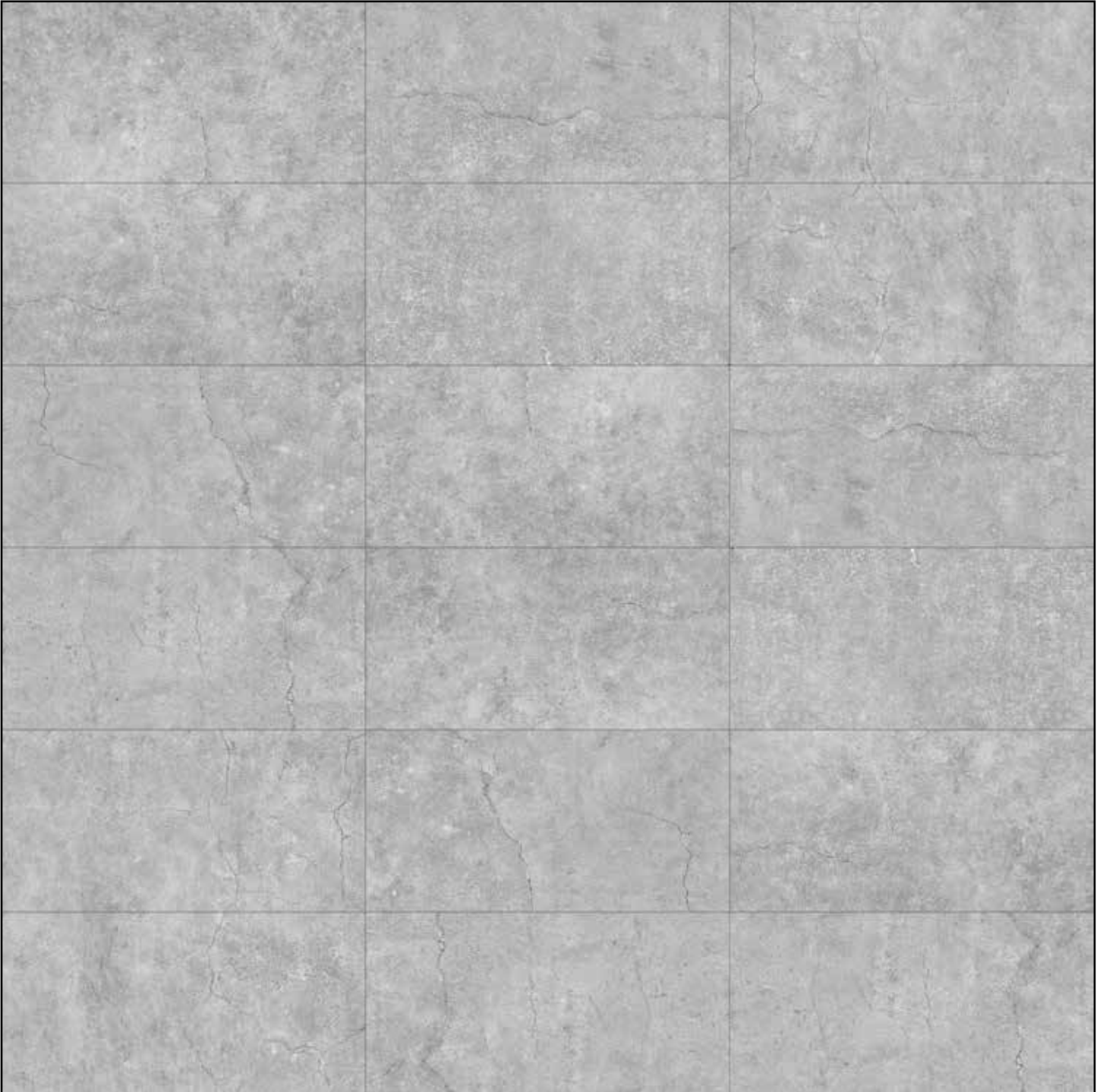


18x36 LORE SAND  
HD PORCELAIN TILE  
335-102



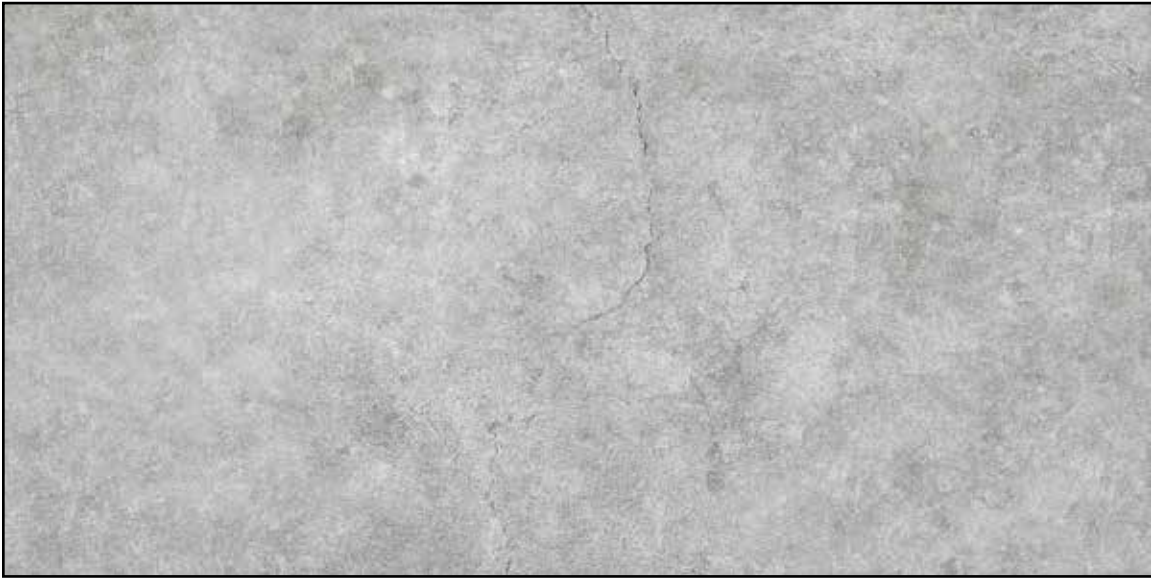
12x24 LORE SAND  
HD PORCELAIN TILE  
335-101

**LORE LIGHT GREY**  
GRIT FINISH  
HD PORCELAIN TILE



12x24 LORE LIGHT GREY GRIT  
HD PORCELAIN TILE

**LORE LIGHT GREY**  
GRIT FINISH  
HD PORCELAIN TILE

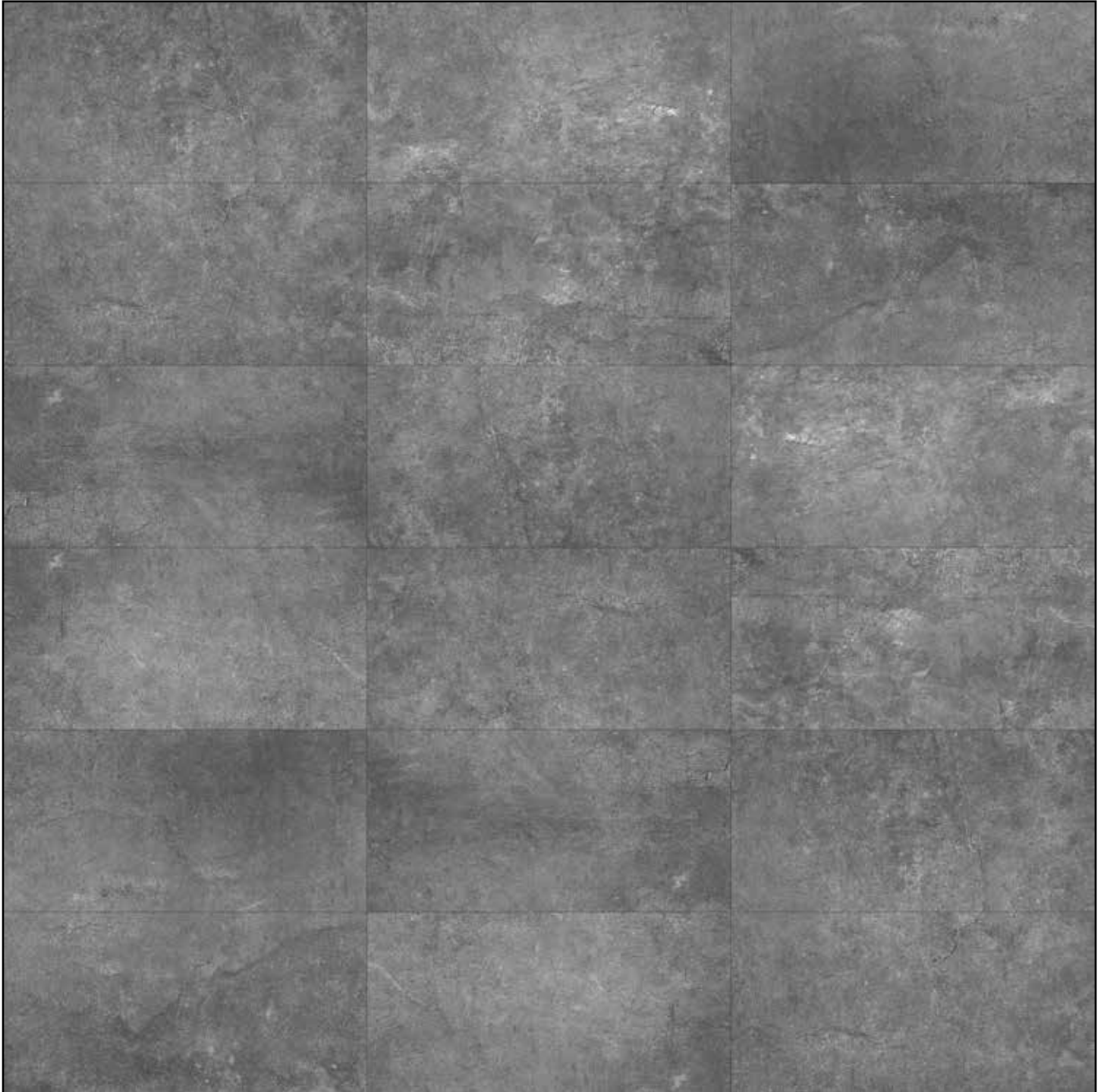


18x36 LORE LIGHT GREY  
HD PORCELAIN TILE  
335-104



12x24 LORE LIGHT GREY  
HD PORCELAIN TILE  
335-103

**LORE DARK GREY**  
GRIT FINISH  
HD PORCELAIN TILE



12x24 LORE DARK GREY GRIT  
HD PORCELAIN TILE

**LORE DARK GREY**  
GRIT FINISH  
HD PORCELAIN TILE



18x36 LORE DARK GREY  
HD PORCELAIN TILE  
335-106



12x24 LORE DARK GREY  
HD PORCELAIN TILE  
335-105

Packaging Information

DESCRIPTION	ITEM CODE			LBS/BOX	PCS/BOX	SQFT/BOX	PCS/SKID	SQFT/SKID
LORE 12x24	335-101	335-103	335-105	72	8	16	320	640
LORE 18x36	335-102	335-104	335-106	64.2	3	13.5	87	391.5

General Specifications

DESCRIPTION	METHOD	UNIT	12"x24"	18"x36"
ACTUAL SIZE	ISO 10545-2	mm - in	297 x 600 mm 11.8 x 23.6 in	450 x 900 mm 17.7 x 35.4 in
THICKNESS	ISO 10545-2	mm - in	9.5 mm 0.37 in	9.8 mm 0.39 in
WATER ABSORPTION	ISO 10545-3	(%)	≤ 0.1	≤ 0.1
ABRASION RESISTANCE	ISO 10545-4	(PEI)	Class 4	Class 4
SCRATCH HARDNESS	EN 15771	(Mohs)	8	8
BREAKING STRENGTH	ISO 10545-4	(N)	≥ 1300	≥ 1300
CHEMICAL RESISTANCE	ISO 10545-13	(GL)	Class GLA	Class GLA
FROST RESISTANCE	ISO 10545-12		Fully Resistant	Fully Resistant
STATIC COF (WET)		(μ)	≥ 0.40	≥ 0.40
STATIC COF (DRY)		(μ)	≥ 0.60	≥ 0.60
SHADE VARIATION			V2	V2



**Tile + Stone Source**

#105, 6204 6A St SE  
Calgary, AB T2H 2B7  
403.252.8868

15304 111 Ave NW  
Edmonton, AB T5M 4C8  
780.756.8453

[www.tilestonesource.com](http://www.tilestonesource.com)